



# Harristown Development Corp. Saves Thousands Annually

**HRMG delivers a time and money-saving employee self service, payroll, and human resources solution to large developer.**

## Company Profile



**Harristown Development Corporation**  
[www.harristown.net](http://www.harristown.net)

**Headquarters:**  
Harrisburg, PA

**Number of Employees:**  
600+

**Solutions:**  
Sage Abra HRMS  
HR  
Payroll  
Employee Self Service  
Payroll PayCards

Harristown Development Corporation (HDC) was organized in 1974 with a mission to revive the downtown core area of Harrisburg, Pennsylvania, reestablish it as the heart of the city, and return it to a thriving capitol city for all of Pennsylvania. Through the efforts and initiatives of HDC, Harrisburg has seen dramatic economic, cultural, and community development with the realization of numerous projects including the Strawberry Square mall, the Harrisburg Hilton hotel, and the upscale Bricco restaurant.

In all, HDC employs more than 600 individuals across its properties. To ensure its payroll and human resources departments run efficiently and cost effectively, HDC relies on Sage Abra HRMS and the professional team at HRMG Solutions (HRMG).

***“Using Sage Abra Payroll saves us tens of thousands of dollars a year, every year.”***

## **In-house Payroll Saves Tens of Thousands Annually**

HDC began using Sage Abra HR back in 1994; purchasing its first office computer specifically for the task. “We had about half as many employees at that time, but we were expecting rapid growth,” recalls Kelly Viscount, corporate director of human resources at HDC. “We were outsourcing our payroll and had been handling all our HR tasks using manual files and notecards.”

Viscount says that quick success with the HR module led HDC to consider bringing its payroll in house. “HRMG showed us how using the Sage Abra Payroll module could save us money. Essentially we were already doing all the work and ADP produced the checks,” she says. “Using Sage Abra Payroll saves us tens of thousands of dollars a year — every year.”

HDC utilizes a Web-based time-clock program to collect the hours employees work at each of its properties. HRMG developed an import utility to bring the data directly into Sage Abra Payroll, eliminating all manual data entry. "Before we had to print the timecards and key the data into ADP's program," recalls Bunnie Frye, payroll administrator for the company.

### **\$20,000 Labor Savings Per Year**

Additional savings and efficiencies came as HRMG helped the company implement Sage Abra ESS, the employee self-



Employee time is captured on location via a Web-based timeclock system and imported directly into Sage Abra Payroll.

service module. "No longer do we need to print and deliver pay checks and vouchers to 600 employees," explains Frye. "Our employees can view and print their own direct-deposit check vouchers from the ESS portal."

Frye estimates the labor savings to be more than \$20,000 annually: "It has eliminated a large logistical task that consumed a great deal of staff time."

---

***"HRMG is a great partner for HDC. They know our system inside and out and provide us with great support and advice."***

---

The ESS portal is accessible to employees anytime and provides easy access to their payroll and benefit data. "They can make changes to their W-4s and request leave time," Frye explains. "Employees feel empowered and our staff saves time because we get fewer calls to our department."

HDC plans to move its entire open enrollment cycle to ESS this year. "It's worked so well for us so far, this is the natural next step," says Viscount. "Open enrollment is a paper-intensive task, and ESS has the capability to eliminate most of that paper and really streamline the tasks involved."

### **Paycards Extend Efficiencies**

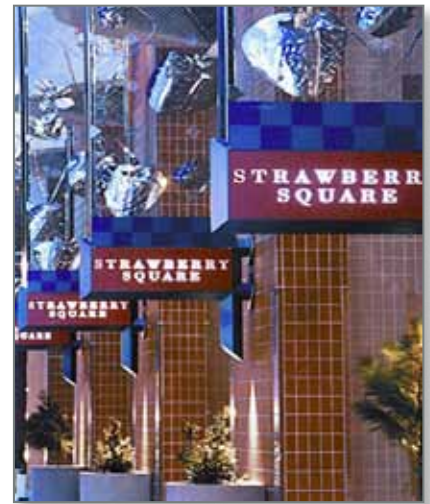
While Direct Deposit and ESS are ideal for most of HDC's employees, the company has a significant number of employees who do not have a bank account. For these people, until recently HDC was still issuing paper checks.

"HRMG told us about Sage Payroll PayCards," says Frye. "Think of them like a debit card that gets reloaded with an employee's net pay every payday. For us it is every bit as easy as performing direct deposit. It is a tremendous benefit

for our unbanked employees and a time saver for us."

### **Develop a Perfect Partnership**

"HRMG works hand-in-hand with us," Frye says. "Their training classes are really valuable, and they are willing to tailor the training to fit our staff and work processes."



Sage Abra and HRMG deliver efficiencies that save HDC tens of thousand of dollars annually.

Viscount echoes the sentiment, "HRMG is a great partner for HDC. We have had the same main consultant for over 10 years, but everyone at HRMG is fabulous. They know our system inside and out and provide us with great support and advice."

*HRMG Solutions Inc., a trusted, local Sage Software business partner, has delivered successful, market-tested, HRMS solutions to business clients for over 15 years. HRMG Solutions Inc. ensures clients' complete success through responsive, personal business relationships and exceptional professional services, delivered on-time and on-budget. Our goal is to earn your complete satisfaction through an honest, realistic and straightforward approach, using time-tested solutions, tailored to your specific needs.*



HRMG Solutions, Inc.  
650 Sentry Parkway  
Blue Bell, PA 19422  
Phone: (610) 941-2119  
Fax: (610) 941-2184  
Email: [info@hrmgsolutions.com](mailto:info@hrmgsolutions.com)