

# Sage Abra HRMS

## Sage Abra Payroll

Easily and cost-effectively manage your organization's payroll with Sage Abra Payroll. This comprehensive yet flexible solution includes all the payroll functionality needed by midsized organizations to process payroll accurately and quickly, every time. The robust functionality of Abra Payroll makes it easy to produce paychecks on demand, run trial payrolls, and make last-minute changes with no hassle. Meeting the needs of your unique organization is easy with flexible features including unlimited earnings, taxes, and deduction types, multiple user-defined pay groups, and customizable actions.

For U.S. companies (Sage Abra Suite - U.S. Edition), Abra Payroll offers a full range of tax management capabilities, including all standard tax tables, compatibility with Electronic Federal Tax Payment System (EFTPS), and electronic media reporting for all states.

For Canadian companies (Sage Abra Suite - Canada Edition), Abra Payroll includes automatic federal and provincial tax tables, supports filing requirements for the Electronic Funds Transfer Payment System, and accommodates both the check and direct deposit filing methods.

From developing innovative products to providing award-winning customer support, Sage is dedicated to surpassing your expectations. Our software is supported by a nationwide network of Certified Business Partners who are your resource for implementation, training, service, and support.

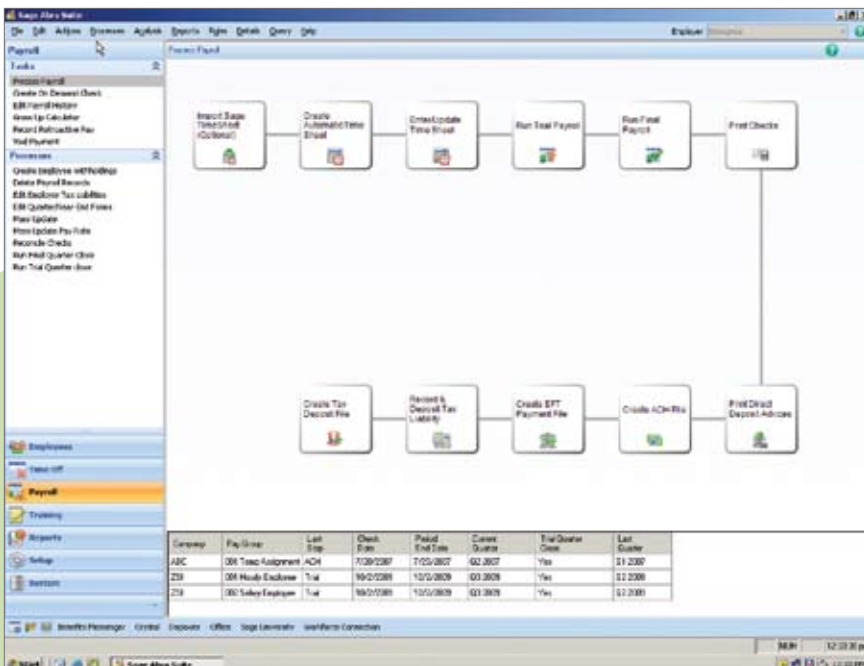
For more information about Abra Payroll, please contact HRMG Solutions, Inc. at (610) 941 2119 or visit their website at [www.hrmsgolutions.com](http://www.hrmsgolutions.com).

### BENEFITS

- **Flexible Payroll Processing**  
Simplify your organization's payroll processing with customizable screens, unlimited trial payrolls, and on-demand and retroactive check processing.
- **U.S. Tax Management and Compliance (Sage Abra Suite - U.S. Edition)**  
Meet virtually every U.S. tax management and compliance need with automatic quarterly updates of tax tables and electronic media reporting for all states.
- **Canadian Tax Management and Compliance (Sage Abra Suite - Canada Edition)**  
Meet Canadian tax management and compliance needs with automatic federal and provincial tax tables and filing requirements for the Electronic Funds Transfer Payment System using both check and direct deposit filing methods.
- **Comprehensive Reporting**  
Meet government and management reporting requirements with Crystal Reports® writer, Abra Secure Query report writer, electronic media reporting, and over 100 standard reports.

- **Earning and Deductions**  
Set up unlimited earnings and deduction codes with an easy-to-use setup wizard.

- **Available with:**  
Sage Abra Suite - U.S. Edition  
Sage Abra Suite - Canada Edition



◀ Sage Abra Payroll streamlines the entire payroll process by making it easier to produce paychecks on demand, run trial payrolls, make last minute changes, and much more.

## FEATURES

<b>Simplified Payroll Processing</b>	Customizable "actions" screens walk you step by step through the payroll process and allow you to modify the system to meet your unique needs. Run an unlimited number of trial payrolls and run gross-to-net calculation reports to ensure data accuracy prior to printing checks or creating history reports.
<b>U.S. Tax Management and Reporting</b>	Abra Payroll offers highly robust tax management features, including automatic quarterly updates of tax tables and electronic media reporting for all states, and supports federal, state, and over 2000 local tax jurisdictions, federal and state income, unemployment, disability taxes, workers compensation, ACH credit transaction files, and more. For Sage Abra Suite – U.S. Edition only.
<b>Comprehensive Reporting and Compliance</b>	Includes over 100 built-in reports, two included Crystal Reports licenses, customizable Crystal Reports templates, and the easy-to-use Abra Secure Query report writer.
<b>Canadian Tax Management</b>	Comply with Canadian tax management with automatic federal and provincial tax tables, and filing requirements for the Electronic Funds Transfer Payment System using both check and direct deposit filing methods. Comes complete with standard reports including Payroll Deposit Requirements, Workers Compensation Costs, and Unemployment Disability Wages, as well as T4, T4A, T4A-NR, Releve 1, Releve 2, and ROE. For Sage Abra Suite – Canada Edition only.
<b>Check Printing</b>	Preview and print standard and customized checks and direct deposit advices for selected pay groups with a few clicks of a mouse.
<b>Direct Deposit</b>	Supports unlimited direct deposit accounts for each employee, as well as automatic ACH file creation.
<b>Earnings and Deductions</b>	Guided interviews make it easy to set up unlimited earnings and deductions codes with support for a wide range of earning types, including base pay earnings, premium pay earnings, and tax only earnings. You can also define unlimited deductions for each employee and easily manage them with rules such as withholding frequencies and employer matching.
<b>Payroll Employee Self Service</b>	Employees can manage a variety of personal payroll information when used with Sage Abra ESS. View paycheck details, pay history, payroll deductions, tax withholdings, view and print pay stubs, and authorize W-4 form changes with digital signatures.
<b>Integration</b>	Seamless integration with Abra HR eliminates duplicate data entry, simplifies reporting, and automatically links benefit plans in HR to deductions in payroll. Abra Payroll interfaces with most major accounting packages and most time clock systems.